

TG Grade 6 Clarinet - Scales and Arpeggios

The following scales to be performed *f* or *p* from memory; tongued, slurred or staccato-tongued.

B major scale



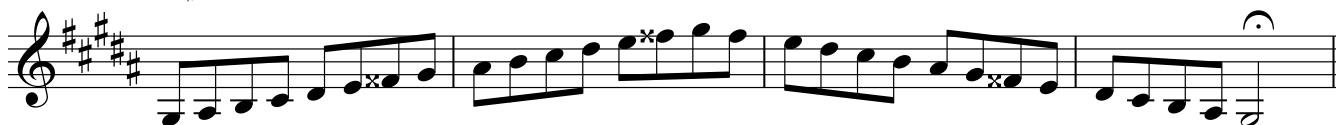
B major arpeggio



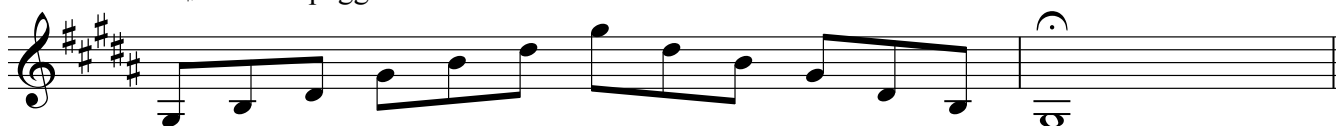
G# melodic minor scale



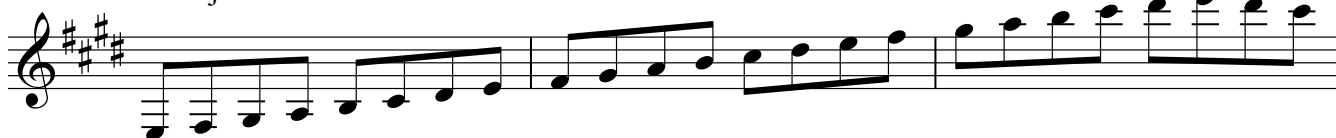
G# harmonic minor scale



G# minor arpeggio



E major scale



E major arpeggio



C# melodic minor scale



TG grade 6 clarinet

C# harmonic minor scale



Musical notation for the C# harmonic minor scale, consisting of two lines of a five-line staff. The first line contains the ascending scale: C#4, D#4, E5, F#5, G#5, A5, B5, A5, G#5, F#5, E5, D#4, C#4. The second line contains the descending scale: C#4, D#4, E5, F#5, G#5, A5, B5, A5, G#5, F#5, E5, D#4, C#4. The key signature has three sharps (F#, C#, G#).

C# minor arpeggio



Musical notation for the C# minor arpeggio, consisting of two lines of a five-line staff. The first line contains the ascending arpeggio: C#4, E5, G#5, A5. The second line contains the descending arpeggio: G#5, A5, E5, C#4. The key signature has three sharps (F#, C#, G#).

A major scale



Musical notation for the A major scale, consisting of two lines of a five-line staff. The first line contains the ascending scale: A4, B4, C#5, D5, E5, F#5, G#5, A5. The second line contains the descending scale: A5, G#5, F#5, E5, D5, C#5, B4, A4. The key signature has three sharps (F#, C#, G#).



Musical notation for the A major scale, consisting of two lines of a five-line staff. The first line contains the ascending scale: A4, B4, C#5, D5, E5, F#5, G#5, A5. The second line contains the descending scale: A5, G#5, F#5, E5, D5, C#5, B4, A4. The key signature has three sharps (F#, C#, G#).

A major arpeggio



Musical notation for the A major arpeggio, consisting of two lines of a five-line staff. The first line contains the ascending arpeggio: A4, C#5, E5, G#5. The second line contains the descending arpeggio: G#5, E5, C#5, A4. The key signature has three sharps (F#, C#, G#).

E melodic minor scale



Musical notation for the E melodic minor scale, consisting of two lines of a five-line staff. The first line contains the ascending scale: E4, F#4, G#4, A4, B4, C#5, D5, E5. The second line contains the descending scale: E5, D5, C#5, B4, A4, G#4, F#4, E4. The key signature has two sharps (F#, C#).



Musical notation for the E melodic minor scale, consisting of two lines of a five-line staff. The first line contains the ascending scale: E4, F#4, G#4, A4, B4, C#5, D5, E5. The second line contains the descending scale: E5, D5, C#5, B4, A4, G#4, F#4, E4. The key signature has two sharps (F#, C#).

E harmonic minor scale



Musical notation for the E harmonic minor scale, consisting of two lines of a five-line staff. The first line contains the ascending scale: E4, F#4, G#4, A4, B4, C#5, D5, E5. The second line contains the descending scale: E5, D5, C#5, B4, A4, G#4, F#4, E4. The key signature has two sharps (F#, C#).



Musical notation for the E harmonic minor scale, consisting of two lines of a five-line staff. The first line contains the ascending scale: E4, F#4, G#4, A4, B4, C#5, D5, E5. The second line contains the descending scale: E5, D5, C#5, B4, A4, G#4, F#4, E4. The key signature has two sharps (F#, C#).

E minor arpeggio



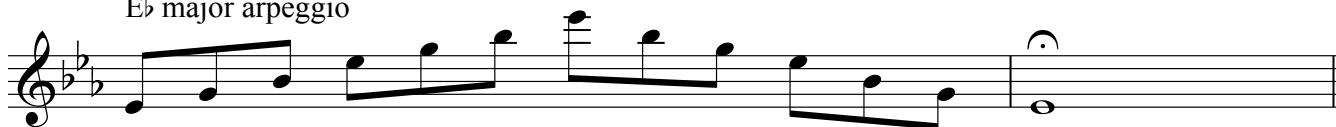
Musical notation for the E minor arpeggio, consisting of two lines of a five-line staff. The first line contains the ascending arpeggio: E4, G#4, B4, C#5. The second line contains the descending arpeggio: C#5, B4, G#4, E4. The key signature has two sharps (F#, C#).

TG grade 6 clarinet

E \flat major scale



E \flat major arpeggio



C melodic minor scale



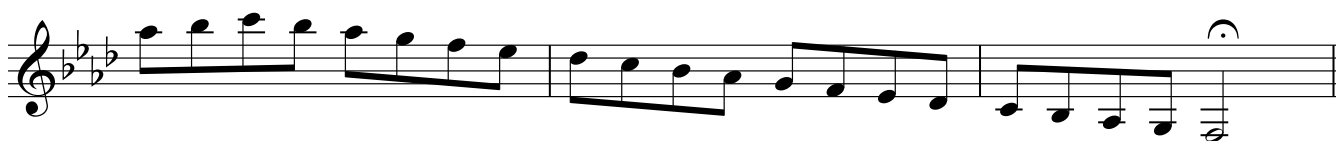
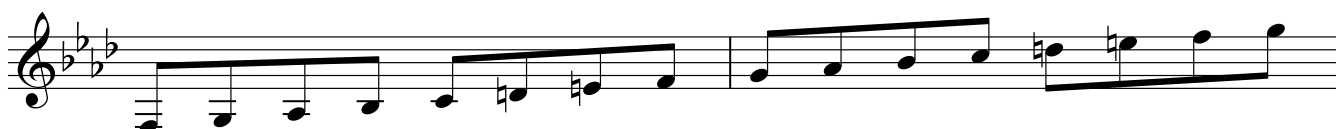
C harmonic minor scale



C minor arpeggio



F melodic minor scale

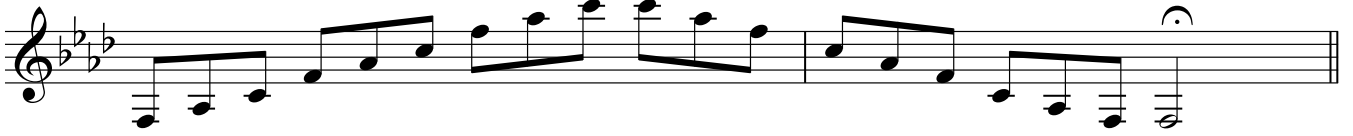


F harmonic minor scale

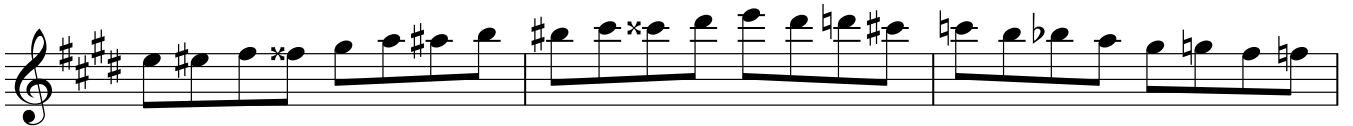


TG grade 6 clarinet

F minor arpeggio

D \flat major scaleD \flat major arpeggio

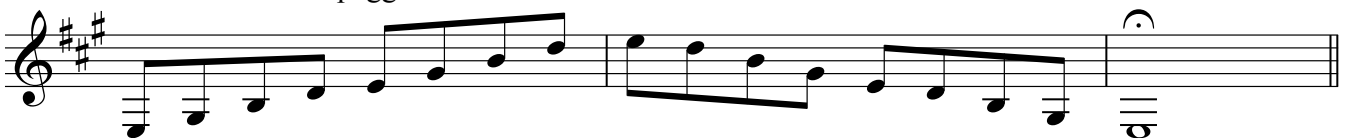
E chromatic scale



G whole tone scale



Dominant 7th. arpeggio in A



Diminished 7th. on E (Dominant minor 9th. in F)

