

TG Grade 8 Clarinet - Scales and Arpeggios

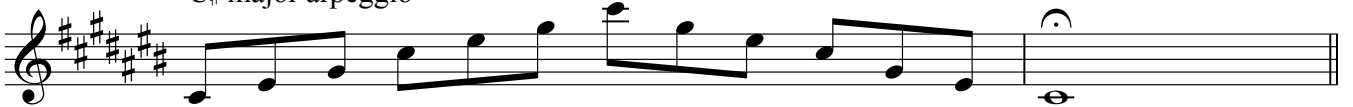
The following scales to be performed **f** or **p** from memory; tongued, slurred, staccato-tongued or using mixed articulation, as requested by the examiner.

Each page of the following exercises is devoted to one key signature.

C# major scale



C# major arpeggio



A# melodic minor scale



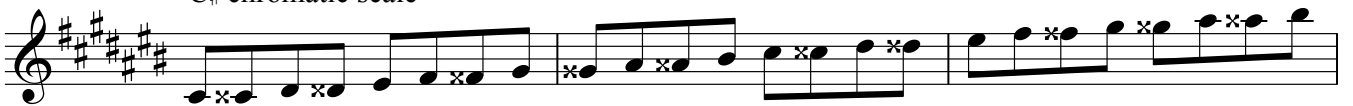
A# harmonic minor scale



A# minor arpeggio



C# chromatic scale



TG grade 8 clarinet

F# major scale

Musical notation for the F# major scale, consisting of two staves. The upper staff is in treble clef and the lower staff is in bass clef. The key signature has four sharps (F#, C#, G#, D#). The melody is written in eighth notes, ascending and then descending, with a final whole note on F#.

F# major arpeggio

Musical notation for the F# major arpeggio, consisting of two staves. The upper staff is in treble clef and the lower staff is in bass clef. The key signature has four sharps. The melody is written in eighth notes, ascending and then descending, with a final whole note on F#.

Diminished 7th. on E# (Dominant minor 9th. in F#)

Musical notation for a diminished 7th chord on E#, consisting of two staves. The upper staff is in treble clef and the lower staff is in bass clef. The key signature has four sharps. The melody is written in eighth notes, ascending and then descending, with a final whole note on E#.

D# melodic minor scale

Musical notation for the D# melodic minor scale, consisting of two staves. The upper staff is in treble clef and the lower staff is in bass clef. The key signature has four sharps. The melody is written in eighth notes, ascending and then descending, with a final whole note on D#.

D# harmonic minor scale

Musical notation for the D# harmonic minor scale, consisting of two staves. The upper staff is in treble clef and the lower staff is in bass clef. The key signature has four sharps. The melody is written in eighth notes, ascending and then descending, with a final whole note on D#.

D# minor arpeggio

Musical notation for the D# minor arpeggio, consisting of two staves. The upper staff is in treble clef and the lower staff is in bass clef. The key signature has four sharps. The melody is written in eighth notes, ascending and then descending, with a final whole note on D#.

F# chromatic scale

Musical notation for the F# chromatic scale, consisting of two staves. The upper staff is in treble clef and the lower staff is in bass clef. The key signature has four sharps. The melody is written in eighth notes, ascending and then descending, with a final whole note on F#.

Continuation of the F# chromatic scale, consisting of two staves. The upper staff is in treble clef and the lower staff is in bass clef. The key signature has four sharps. The melody is written in eighth notes, ascending and then descending, with a final whole note on F#.

Continuation of the F# chromatic scale, consisting of two staves. The upper staff is in treble clef and the lower staff is in bass clef. The key signature has four sharps. The melody is written in eighth notes, ascending and then descending, with a final whole note on F#.

TG grade 8 clarinet

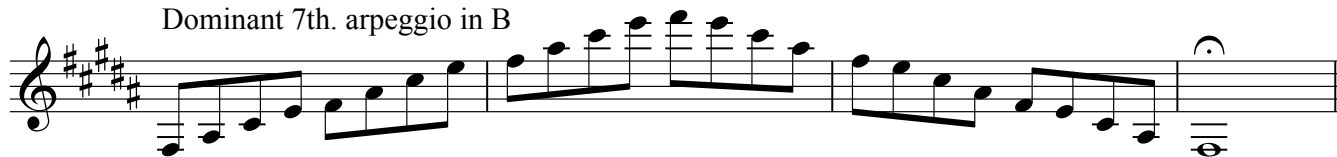
B major scale



B major arpeggio



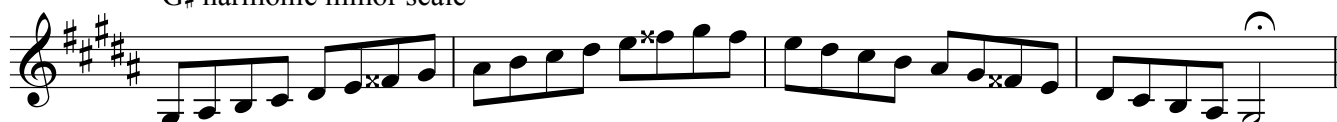
Dominant 7th. arpeggio in B



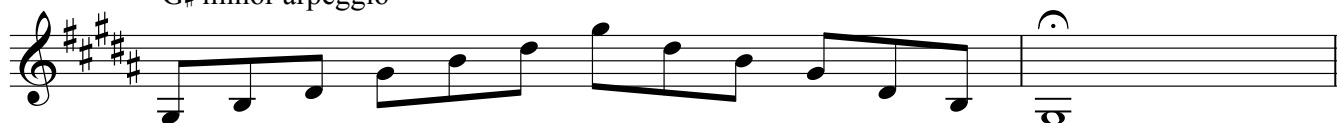
G# melodic minor scale



G# harmonic minor scale



G# minor arpeggio



B chromatic scale



TG grade 8 clarinet

E major scale

Musical notation for the E major scale, ascending and descending. The key signature has three sharps (F#, C#, G#). The scale is written on a treble clef staff. The ascending line consists of quarter notes: E4, F#4, G#4, A4, B4, C#5, D5, E5. The descending line consists of quarter notes: D5, C#5, B4, A4, G#4, F#4, E4. The piece concludes with a whole note E4.

E major arpeggio

Musical notation for the E major arpeggio, ascending and descending. The key signature has three sharps (F#, C#, G#). The scale is written on a treble clef staff. The ascending line consists of quarter notes: E4, G#4, B4, C#5, D5, E5. The descending line consists of quarter notes: D5, C#5, B4, G#4, E4. The piece concludes with a whole note E4.

C# melodic minor scale

Musical notation for the C# melodic minor scale, ascending and descending. The key signature has three sharps (F#, C#, G#). The scale is written on a treble clef staff. The ascending line consists of quarter notes: C#4, D4, E4, F#4, G#4, A4, B4, C#5. The descending line consists of quarter notes: B4, A4, G#4, F#4, E4, D4, C#4. The piece concludes with a whole note C#4.

C# harmonic minor scale

Musical notation for the C# harmonic minor scale, ascending and descending. The key signature has three sharps (F#, C#, G#). The scale is written on a treble clef staff. The ascending line consists of quarter notes: C#4, D4, E4, F#4, G#4, A4, B4, C#5. The descending line consists of quarter notes: B4, A4, G#4, F#4, E4, D4, C#4. The piece concludes with a whole note C#4.

C# minor arpeggio

Musical notation for the C# minor arpeggio, ascending and descending. The key signature has three sharps (F#, C#, G#). The scale is written on a treble clef staff. The ascending line consists of quarter notes: C#4, E4, G#4, C#5, B4, A4, G#4, E4. The descending line consists of quarter notes: D4, C#4, E4, G#4, C#5, B4, A4, G#4, E4. The piece concludes with a whole note C#4.

E chromatic scale

Musical notation for the E chromatic scale, ascending and descending. The key signature has three sharps (F#, C#, G#). The scale is written on a treble clef staff. The ascending line consists of quarter notes: E4, F#4, G#4, A4, B4, C#5, D5, E5. The descending line consists of quarter notes: D5, C#5, B4, A4, G#4, F#4, E4. The piece concludes with a whole note E4.

Musical notation for the E chromatic scale, ascending and descending. The key signature has three sharps (F#, C#, G#). The scale is written on a treble clef staff. The ascending line consists of quarter notes: E4, F#4, G#4, A4, B4, C#5, D5, E5. The descending line consists of quarter notes: D5, C#5, B4, A4, G#4, F#4, E4. The piece concludes with a whole note E4.

Musical notation for the E chromatic scale, ascending and descending. The key signature has three sharps (F#, C#, G#). The scale is written on a treble clef staff. The ascending line consists of quarter notes: E4, F#4, G#4, A4, B4, C#5, D5, E5. The descending line consists of quarter notes: D5, C#5, B4, A4, G#4, F#4, E4. The piece concludes with a whole note E4.

TG grade 8 clarinet

A major scale



Musical notation for the A major scale, starting on A4 and ending on A5 with a fermata.

A major arpeggio



Musical notation for the A major arpeggio, starting on A4 and ending on A5 with a fermata.

Dominant 7th. arpeggio in A



Musical notation for the dominant 7th arpeggio in A, starting on A4 and ending on A5 with a fermata.

F# melodic minor scale



Musical notation for the F# melodic minor scale, starting on F#4 and ending on F#5 with a fermata.

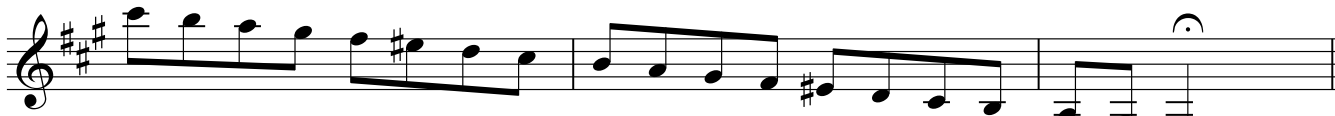


Musical notation for the F# melodic minor scale, starting on F#4 and ending on F#5 with a fermata.

F# harmonic minor scale



Musical notation for the F# harmonic minor scale, starting on F#4 and ending on F#5 with a fermata.



Musical notation for the F# harmonic minor scale, starting on F#4 and ending on F#5 with a fermata.

F# minor arpeggio



Musical notation for the F# minor arpeggio, starting on F#4 and ending on F#5 with a fermata.

A chromatic scale



Musical notation for the A chromatic scale, starting on A4 and ending on A5 with a fermata.



Musical notation for the A chromatic scale, starting on A4 and ending on A5 with a fermata.

TG grade 8 clarinet

D major scale



D major arpeggio



B melodic minor scale



B harmonic minor scale



B minor arpeggio

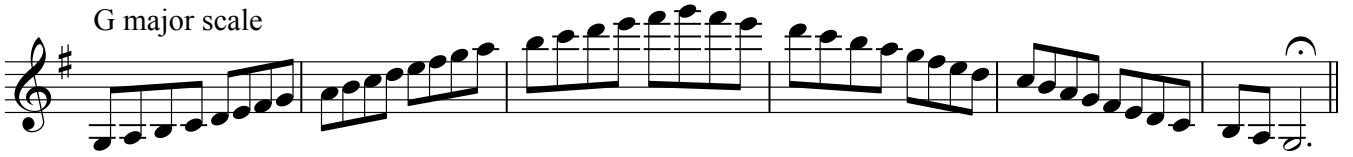


D chromatic scale



TG grade 8 clarinet

G major scale



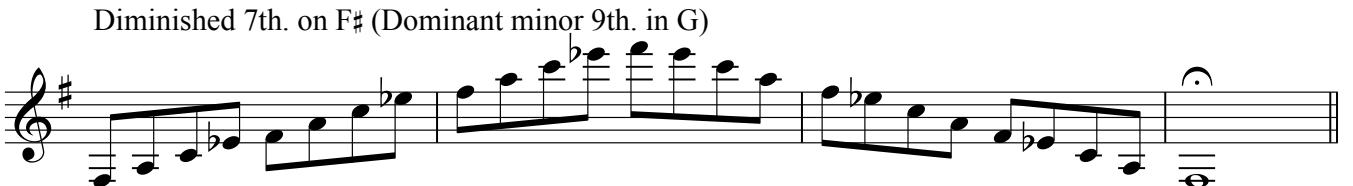
Musical notation for the G major scale, starting on G4 and ending on G5. The scale is written in treble clef with a key signature of one sharp (F#).

G major arpeggio



Musical notation for the G major arpeggio, starting on G4 and ending on G5. The arpeggio is written in treble clef with a key signature of one sharp (F#).

Diminished 7th. on F# (Dominant minor 9th. in G)

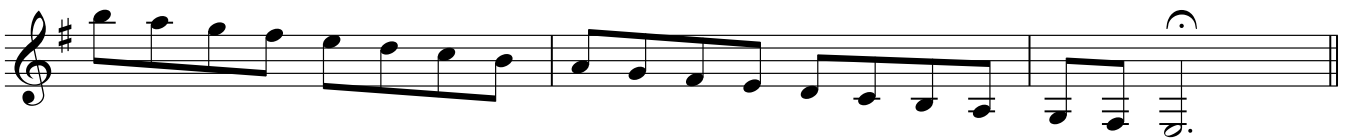


Musical notation for a diminished 7th chord on F#, starting on F#4 and ending on F#5. The chord is written in treble clef with a key signature of one sharp (F#).

E melodic minor scale

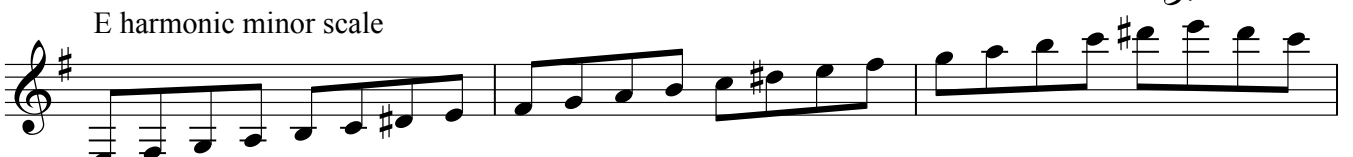


Musical notation for the E melodic minor scale, starting on E4 and ending on E5. The scale is written in treble clef with a key signature of two sharps (F# and C#).

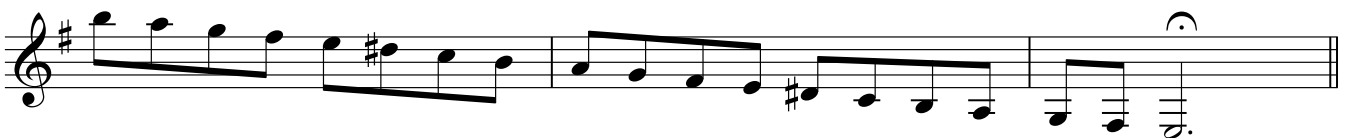


Musical notation for the E melodic minor scale, starting on E4 and ending on E5. The scale is written in treble clef with a key signature of two sharps (F# and C#).

E harmonic minor scale



Musical notation for the E harmonic minor scale, starting on E4 and ending on E5. The scale is written in treble clef with a key signature of two sharps (F# and C#).



Musical notation for the E harmonic minor scale, starting on E4 and ending on E5. The scale is written in treble clef with a key signature of two sharps (F# and C#).

E minor arpeggio



Musical notation for the E minor arpeggio, starting on E4 and ending on E5. The arpeggio is written in treble clef with a key signature of two sharps (F# and C#).

G chromatic scale



Musical notation for the G chromatic scale, starting on G4 and ending on G5. The scale is written in treble clef with a key signature of one sharp (F#).



Musical notation for the G chromatic scale, starting on G4 and ending on G5. The scale is written in treble clef with a key signature of one sharp (F#).



Musical notation for the G chromatic scale, starting on G4 and ending on G5. The scale is written in treble clef with a key signature of one sharp (F#).

TG grade 8 clarinet

C major scale



C major arpeggio



Dominant 7th. arpeggio in C



A melodic minor scale



A harmonic minor scale



A minor arpeggio

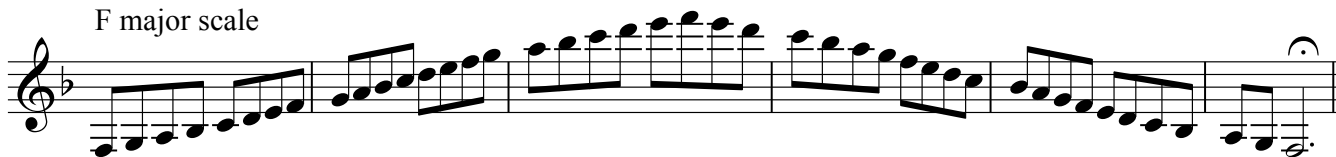


C chromatic scale



TG grade 8 clarinet

F major scale



F major arpeggio



Diminished 7th. on E (Dominant minor 9th. in F)



D melodic minor scale



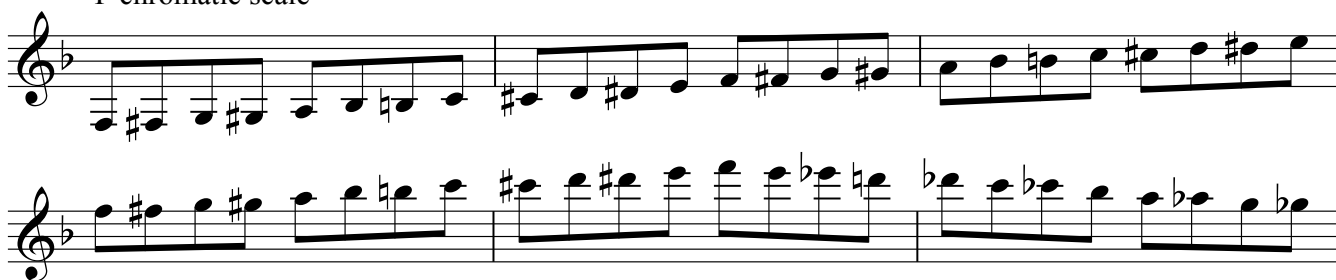
D harmonic minor scale



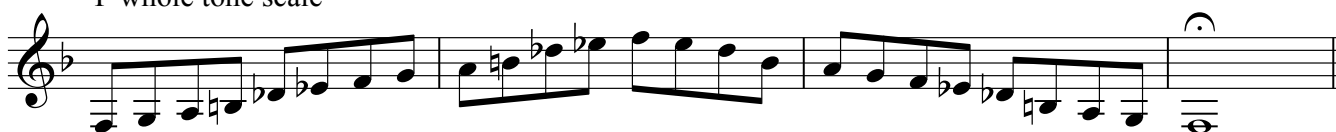
D minor arpeggio



F chromatic scale

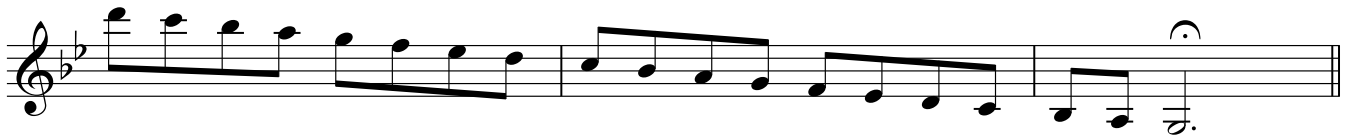


F whole tone scale

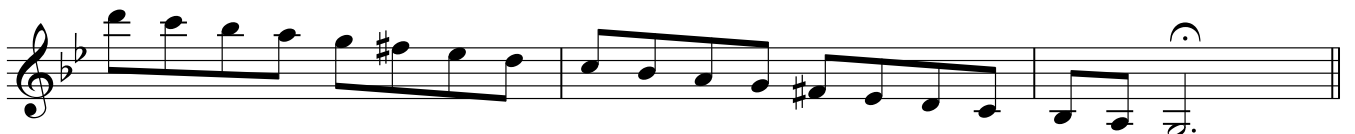


*TG grade 8 clarinet*B \flat major scaleB \flat major arpeggioDominant 7th. arpeggio in B \flat 

G melodic minor scale



G harmonic minor scale



G minor arpeggio

B \flat chromatic scale

*TG grade 8 clarinet*E \flat major scaleE \flat major arpeggio

C melodic minor scale



C harmonic minor scale

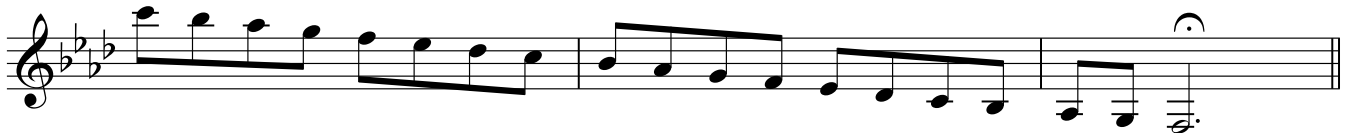


C minor arpeggio

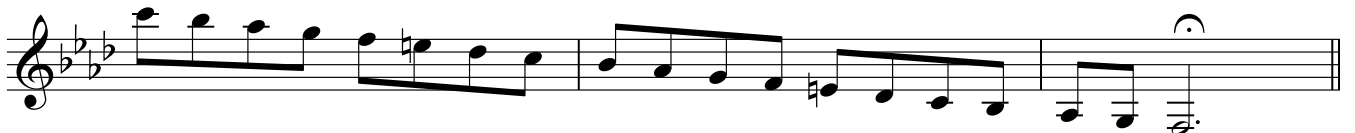
E \flat chromatic scale

*TG grade 8 clarinet*A \flat major scaleA \flat major arpeggio

F melodic minor scale



F harmonic minor scale



F minor arpeggio

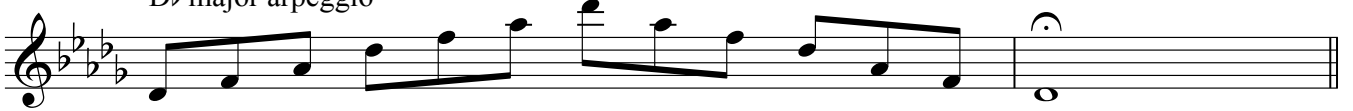
A \flat chromatic scale

TG grade 8 clarinet

D \flat major scale



D \flat major arpeggio



B \flat melodic minor scale



B \flat harmonic minor scale



B \flat minor arpeggio



D \flat chromatic scale



*TG grade 8 clarinet*G \flat major scale

Two staves of musical notation for the G \flat major scale. The first staff shows the ascending scale from G \flat to G \flat (octave). The second staff shows the descending scale from G \flat to G \flat (octave), ending with a whole note G \flat on a fermata.

G \flat major arpeggio

Two staves of musical notation for the G \flat major arpeggio. The first staff shows the ascending arpeggio (G \flat , B \flat , D \flat , E \flat , F, G \flat). The second staff shows the descending arpeggio (G \flat , F, E \flat , D \flat , B \flat , G \flat), ending with a whole note G \flat on a fermata.

Diminished 7th. on F (Dominant minor 9th. in G \flat)

Two staves of musical notation for a diminished 7th chord on F. The first staff shows the ascending scale of the chord (F, G \flat , A \flat , B \flat , C \flat , D \flat , E \flat , F). The second staff shows the descending scale (F, E \flat , D \flat , C \flat , B \flat , A \flat , G \flat , F), ending with a whole note F on a fermata.

E \flat melodic minor scale

Two staves of musical notation for the E \flat melodic minor scale. The first staff shows the ascending scale (E \flat , F, G, A, B \flat , C \flat , D \flat , E \flat). The second staff shows the descending scale (E \flat , D \flat , C \flat , B \flat , A, G, F, E \flat), ending with a whole note E \flat on a fermata.

E \flat harmonic minor scale

Two staves of musical notation for the E \flat harmonic minor scale. The first staff shows the ascending scale (E \flat , F, G, A, B \flat , C \flat , D \flat , E \flat). The second staff shows the descending scale (E \flat , D \flat , C \flat , B \flat , A, G, F, E \flat), ending with a whole note E \flat on a fermata.

E \flat minor arpeggio

Two staves of musical notation for the E \flat minor arpeggio. The first staff shows the ascending arpeggio (E \flat , G \flat , B \flat , C \flat , D \flat , E \flat). The second staff shows the descending arpeggio (E \flat , D \flat , C \flat , B \flat , G \flat , E \flat), ending with a whole note E \flat on a fermata.

G \flat chromatic scale

Two staves of musical notation for the G \flat chromatic scale. The first staff shows the ascending chromatic scale from G \flat to G \flat (octave). The second staff shows the descending chromatic scale from G \flat to G \flat (octave), ending with a whole note G \flat on a fermata.

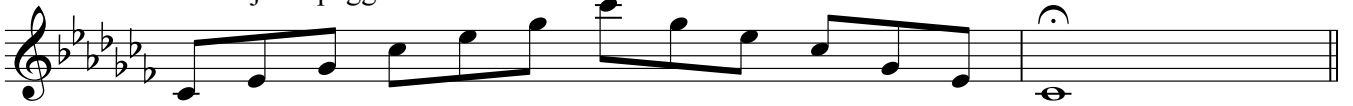
Two staves of musical notation for the G \flat chromatic scale continuation. The first staff shows the ascending chromatic scale from G \flat to G \flat (octave). The second staff shows the descending chromatic scale from G \flat to G \flat (octave), ending with a whole note G \flat on a fermata.

TG grade 8 clarinet

C \flat major scale



C \flat major arpeggio



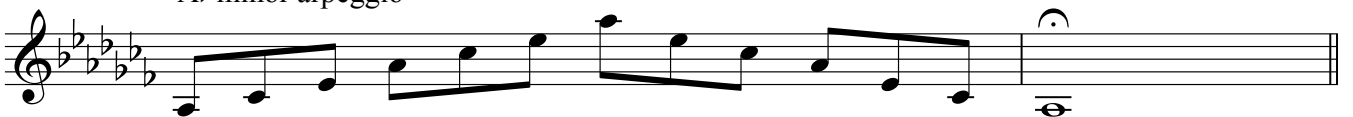
A \flat melodic minor scale



A \flat harmonic minor scale



A \flat minor arpeggio



C \flat chromatic scale

