

TG Grade 8 Flute - Scales and Arpeggios

The following scales to be performed **f** or **p** from memory; tongued, slurred, staccato-tongued or using mixed articulation, as requested by the examiner.

Each page of the following exercises is devoted to one key signature.

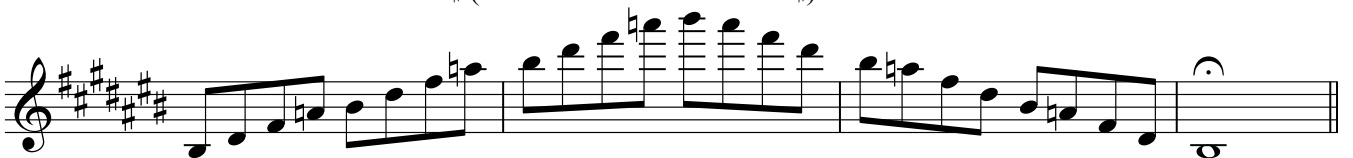
C# major scale



C# major arpeggio



Diminished 7th. on B# (Dominant minor 9th. in C#)



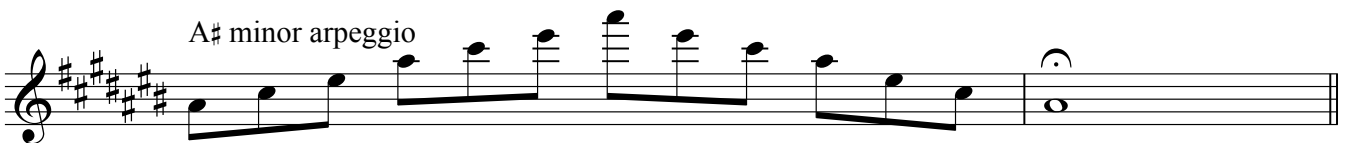
A# melodic minor scale



A# harmonic minor scale



A# minor arpeggio



C# chromatic scale

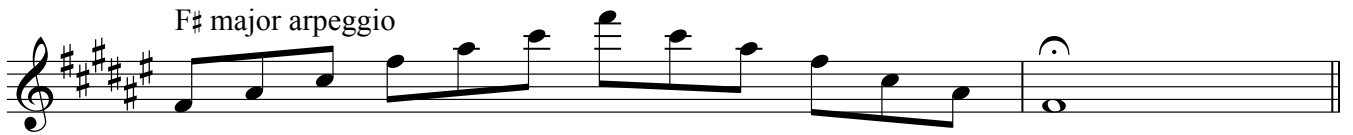


TG grade 8 flute

F# major scale

Musical notation for the F# major scale, starting on F#4 and ending on F#5. The scale is written in treble clef with a key signature of three sharps (F#, C#, G#). It consists of an ascending eighth-note scale followed by a descending eighth-note scale, ending with a whole note F#5.

F# major arpeggio

Musical notation for the F# major arpeggio, starting on F#4 and ending on F#5. The notes are F#4, A4, C#5, and F#5, played in an ascending order followed by a descending order, ending with a whole note F#5.

Diminished 7th. on E# (Dominant minor 9th. in F#)

Musical notation for a diminished 7th chord on E# (Dominant minor 9th in F#), starting on E#4 and ending on E#5. The notes are E#4, G#4, Bb4, and E#5, played in an ascending order followed by a descending order, ending with a whole note E#5.

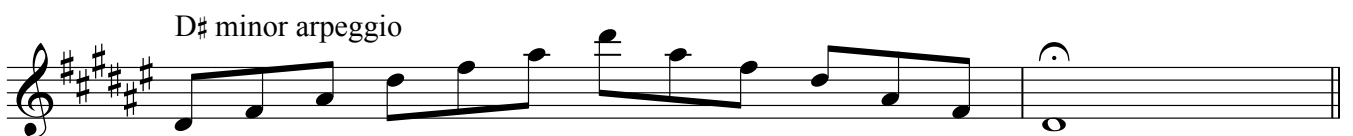
D# melodic minor scale

Musical notation for the D# melodic minor scale, starting on D#4 and ending on D#5. The scale is written in treble clef with a key signature of three sharps (F#, C#, G#). It consists of an ascending eighth-note scale followed by a descending eighth-note scale, ending with a whole note D#5.

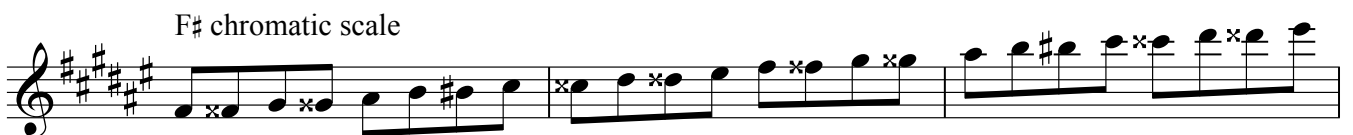
D# harmonic minor scale

Musical notation for the D# harmonic minor scale, starting on D#4 and ending on D#5. The scale is written in treble clef with a key signature of three sharps (F#, C#, G#). It consists of an ascending eighth-note scale followed by a descending eighth-note scale, ending with a whole note D#5.

D# minor arpeggio

Musical notation for the D# minor arpeggio, starting on D#4 and ending on D#5. The notes are D#4, F#4, and D#5, played in an ascending order followed by a descending order, ending with a whole note D#5.

F# chromatic scale

Musical notation for the F# chromatic scale, starting on F#4 and ending on F#5. The scale is written in treble clef with a key signature of three sharps (F#, C#, G#). It consists of an ascending eighth-note scale followed by a descending eighth-note scale, ending with a whole note F#5.Musical notation for the F# chromatic scale, starting on F#4 and ending on F#5. The scale is written in treble clef with a key signature of three sharps (F#, C#, G#). It consists of an ascending eighth-note scale followed by a descending eighth-note scale, ending with a whole note F#5.

TG grade 8 flute

E major scale



E major arpeggio



Dominant 7th. arpeggio in E



C# melodic minor scale



C# harmonic minor scale

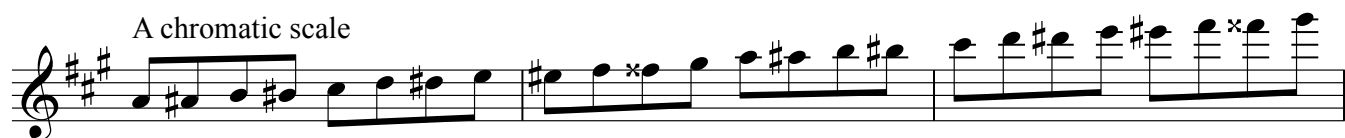
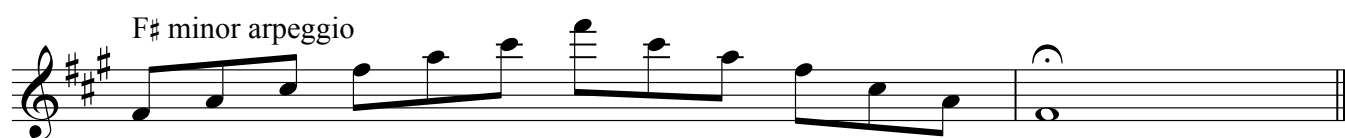
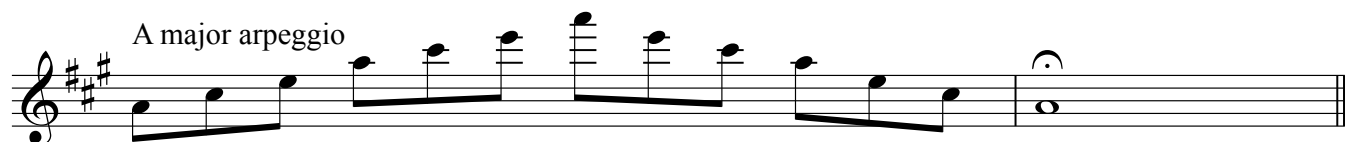


C# minor arpeggio



E chromatic scale



TG grade 8 flute

TG grade 8 flute

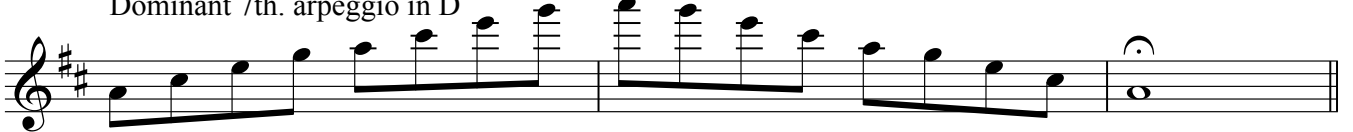
D major scale



D major arpeggio



Dominant 7th. arpeggio in D



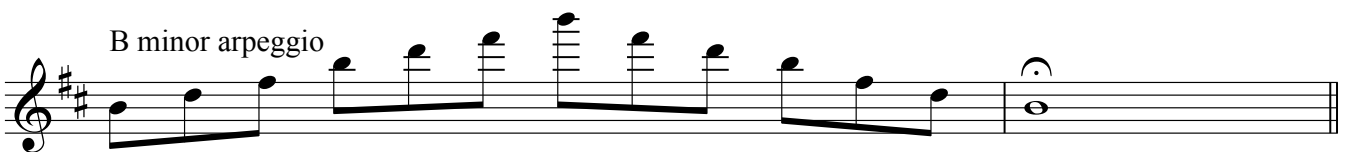
B melodic minor scale



B harmonic minor scale



B minor arpeggio

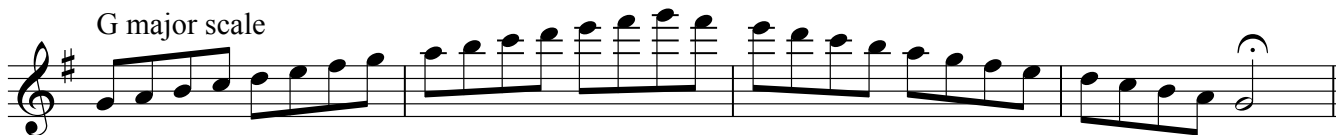


D chromatic scale



TG grade 8 flute

G major scale



Musical notation for the G major scale in treble clef, starting on G4. The scale is written in a single line with a key signature of one sharp (F#). It consists of two phrases: an ascending scale from G4 to G5 and a descending scale from G5 to G4, both in quarter notes. The final note is a half note with a fermata.

G major arpeggio



Musical notation for the G major arpeggio in treble clef, starting on G4. The notes G4, B4, D5, and G5 are played in quarter notes, followed by a descending sequence of D5, B4, and G4 in quarter notes. The final note is a half note with a fermata.

E melodic minor scale



Musical notation for the E melodic minor scale in treble clef, starting on E4. The scale is written in a single line with a key signature of one sharp (F#). It consists of two phrases: an ascending scale from E4 to E5 and a descending scale from E5 to E4, both in quarter notes. The final note is a half note with a fermata.

E harmonic minor scale



Musical notation for the E harmonic minor scale in treble clef, starting on E4. The scale is written in a single line with a key signature of one sharp (F#). It consists of two phrases: an ascending scale from E4 to E5 and a descending scale from E5 to E4, both in quarter notes. The final note is a half note with a fermata.

E minor arpeggio



Musical notation for the E minor arpeggio in treble clef, starting on E4. The notes E4, G4, B4, and E5 are played in quarter notes, followed by a descending sequence of B4, G4, and E4 in quarter notes. The final note is a half note with a fermata.

G chromatic scale



Musical notation for the G chromatic scale in treble clef, starting on G4. The scale is written in a single line with a key signature of one sharp (F#). It consists of two phrases: an ascending chromatic scale from G4 to G5 and a descending chromatic scale from G5 to G4, both in quarter notes. The final note is a half note with a fermata.



Musical notation for the G chromatic scale in treble clef, starting on G4. The scale is written in a single line with a key signature of one sharp (F#). It consists of two phrases: an ascending chromatic scale from G4 to G5 and a descending chromatic scale from G5 to G4, both in quarter notes. The final note is a half note with a fermata.

TG grade 8 flute

C major scale

Two staves of musical notation for the C major scale. The first staff shows the ascending scale from middle C (C4) to C5. The second staff shows the descending scale from C5 to C4, ending with a whole note C4.

C major arpeggio

One staff of musical notation for the C major arpeggio. It consists of a sequence of eighth notes: C4, E4, G4, A4, B4, C5, B4, A4, G4, E4, C4, ending with a whole note C4.

C whole tone scale

One staff of musical notation for the C whole tone scale. It consists of a sequence of eighth notes: C4, D4, E4, F#4, G4, A4, B4, C5, B4, A4, G4, F#4, E4, D4, C4, ending with a whole note C4.

A melodic minor scale

Two staves of musical notation for the A melodic minor scale. The first staff shows the ascending scale from A3 to A4. The second staff shows the descending scale from A4 to A3, ending with a whole note A3.

A harmonic minor scale

Two staves of musical notation for the A harmonic minor scale. The first staff shows the ascending scale from A3 to A4. The second staff shows the descending scale from A4 to A3, ending with a whole note A3.

A minor arpeggio

One staff of musical notation for the A minor arpeggio. It consists of a sequence of eighth notes: A3, C4, E4, F4, G4, A4, G4, F4, E4, C4, A3, ending with a whole note A3.

C chromatic scale

Three staves of musical notation for the C chromatic scale. The first staff shows the ascending scale from C4 to C5. The second staff shows the descending scale from C5 to C4. The third staff shows the descending scale from C5 to C4, ending with a whole note C4.

TG grade 8 flute

F major scale

Musical notation for the F major scale, starting on F4 and ending on F5. The scale is written in treble clef with a key signature of one flat (Bb). It consists of 12 notes: F, G, A, Bb, C, D, E, F, G, A, Bb, C.

F major arpeggio

Musical notation for the F major arpeggio, starting on F4 and ending on F5. The notes are F, A, C, F, A, C, F, A, C, F, A, C, F.

Dominant 7th. arpeggio in F

Musical notation for the dominant 7th arpeggio in F, starting on F4 and ending on F5. The notes are F, Ab, C, Eb, F, Ab, C, Eb, F, Ab, C, Eb, F.

Diminished 7th. on E (Dominant minor 9th. in F)

Musical notation for the diminished 7th arpeggio on E, starting on E4 and ending on E5. The notes are E, G, Bb, D, E, G, Bb, D, E, G, Bb, D, E.

D melodic minor scale

Musical notation for the D melodic minor scale, starting on D4 and ending on D5. The scale is written in treble clef with a key signature of one flat (Bb). It consists of 12 notes: D, E, F, G, Ab, A, B, C, D, E, F, G.

D harmonic minor scale

Musical notation for the D harmonic minor scale, starting on D4 and ending on D5. The scale is written in treble clef with a key signature of one flat (Bb). It consists of 12 notes: D, E, F, G, Ab, Bb, C, D, E, F, G, Ab.

D minor arpeggio

Musical notation for the D minor arpeggio, starting on D4 and ending on D5. The notes are D, F, Ab, D, F, Ab, D, F, Ab, D, F, Ab, D.

F chromatic scale

Musical notation for the F chromatic scale, starting on F4 and ending on F5. The notes are F, F#, G, G#, A, Ab, A, A#, Bb, B, B#, C, C#, D, Db, D, D#, Eb, E, E#, F.


Musical notation for the F chromatic scale, starting on F4 and ending on F5. The notes are F, F#, G, G#, A, Ab, A, A#, Bb, B, B#, C, C#, D, Db, D, D#, Eb, E, E#, F.

F whole tone scale

Musical notation for the F whole tone scale, starting on F4 and ending on F5. The notes are F, G, Ab, Bb, C, D, Eb, F, G, Ab, Bb, C, D, Eb, F.

TG grade 8 flute

B \flat major scale



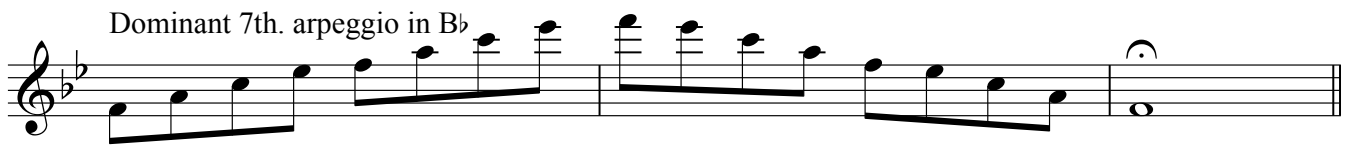
Musical notation for the B \flat major scale, starting on B \flat and ascending and descending in eighth notes, ending with a whole note B \flat .

B \flat major arpeggio



Musical notation for the B \flat major arpeggio, ascending and descending in eighth notes, ending with a whole note B \flat .

Dominant 7th. arpeggio in B \flat



Musical notation for the dominant 7th arpeggio in B \flat , ascending and descending in eighth notes, ending with a whole note B \flat .

G melodic minor scale



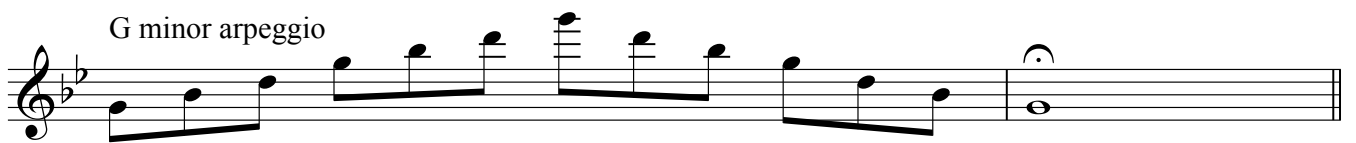
Musical notation for the G melodic minor scale, starting on G and ascending and descending in eighth notes, ending with a whole note G.

G harmonic minor scale



Musical notation for the G harmonic minor scale, starting on G and ascending and descending in eighth notes, ending with a whole note G.

G minor arpeggio



Musical notation for the G minor arpeggio, ascending and descending in eighth notes, ending with a whole note G.

B \flat chromatic scale



Musical notation for the B \flat chromatic scale, ascending and descending in eighth notes, ending with a whole note B \flat .



Musical notation for the B \flat chromatic scale, continuing the ascending and descending eighth notes, ending with a whole note B \flat .

TG grade 8 flute

E \flat major scale



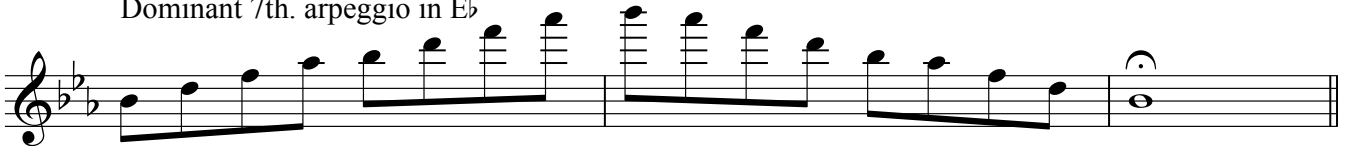
Musical notation for the E \flat major scale, consisting of two staves. The first staff shows the ascending scale, and the second staff shows the descending scale. The key signature has three flats (B \flat , E \flat , A \flat).

E \flat major arpeggio



Musical notation for the E \flat major arpeggio, consisting of two staves. The first staff shows the ascending arpeggio, and the second staff shows the descending arpeggio. The key signature has three flats.

Dominant 7th. arpeggio in E \flat



Musical notation for the Dominant 7th arpeggio in E \flat , consisting of two staves. The first staff shows the ascending arpeggio, and the second staff shows the descending arpeggio. The key signature has three flats.

C melodic minor scale



Musical notation for the C melodic minor scale, consisting of two staves. The first staff shows the ascending scale, and the second staff shows the descending scale. The key signature has three flats.



Musical notation for the C melodic minor scale, consisting of two staves. The first staff shows the ascending scale, and the second staff shows the descending scale. The key signature has three flats.

C harmonic minor scale



Musical notation for the C harmonic minor scale, consisting of two staves. The first staff shows the ascending scale, and the second staff shows the descending scale. The key signature has three flats.



Musical notation for the C harmonic minor scale, consisting of two staves. The first staff shows the ascending scale, and the second staff shows the descending scale. The key signature has three flats.

C minor arpeggio



Musical notation for the C minor arpeggio, consisting of two staves. The first staff shows the ascending arpeggio, and the second staff shows the descending arpeggio. The key signature has three flats.

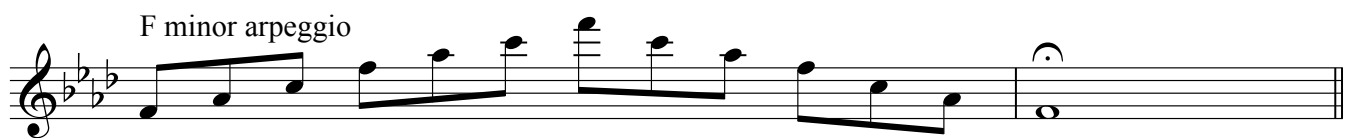
E \flat chromatic scale



Musical notation for the E \flat chromatic scale, consisting of two staves. The first staff shows the ascending chromatic scale, and the second staff shows the descending chromatic scale. The key signature has three flats.



Musical notation for the E \flat chromatic scale, consisting of two staves. The first staff shows the ascending chromatic scale, and the second staff shows the descending chromatic scale. The key signature has three flats.

TG grade 8 flute

TG grade 8 flute

D \flat major scale

Musical notation for the D \flat major scale in treble clef. The key signature has four flats (B \flat , E \flat , A \flat , D \flat). The scale is written in a single line, starting on C4 and ending on C5 with a fermata.

D \flat major arpeggio

Musical notation for the D \flat major arpeggio in treble clef. The notes are C4, F4, A \flat 4, and C5, played in sequence. The final note has a fermata.

Diminished 7th. on C (Dominant minor 9th. in D \flat)

Musical notation for a diminished 7th chord on C in treble clef. The notes are C4, B \flat 4, A \flat 4, G \flat 4, and C5. The scale is written in a single line, starting on C4 and ending on C5 with a fermata.

B \flat melodic minor scale

Musical notation for the B \flat melodic minor scale in treble clef. The key signature has four flats. The scale is written in a single line, starting on B \flat 4 and ending on B \flat 5 with a fermata.

B \flat harmonic minor scale

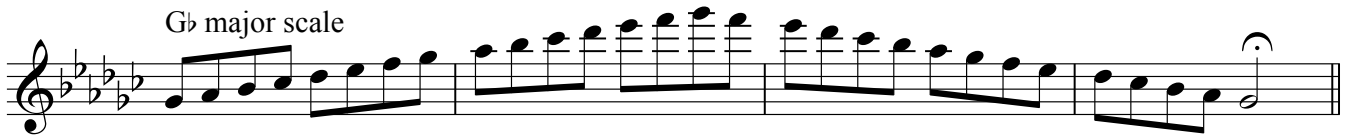
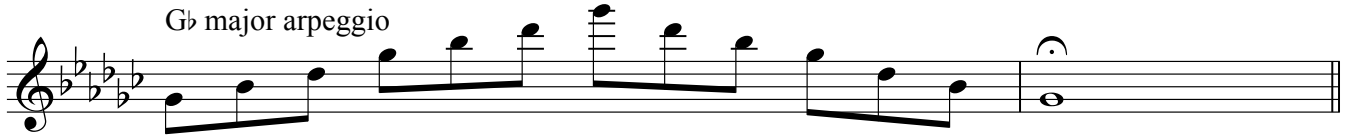
Musical notation for the B \flat harmonic minor scale in treble clef. The key signature has four flats. The scale is written in a single line, starting on B \flat 4 and ending on B \flat 5 with a fermata.

B \flat minor arpeggio

Musical notation for the B \flat minor arpeggio in treble clef. The notes are B \flat 4, D \flat 4, F \flat 4, and B \flat 5, played in sequence. The final note has a fermata.

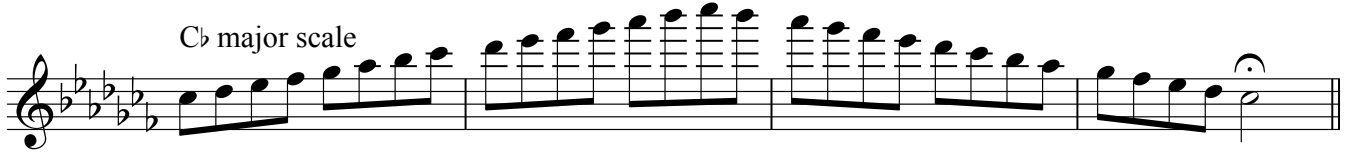
D \flat chromatic scale

Musical notation for the D \flat chromatic scale in treble clef. The key signature has four flats. The scale is written in a single line, starting on C4 and ending on C5 with a fermata.Musical notation for the D \flat chromatic scale in treble clef, continuing from the previous block. The scale is written in a single line, starting on C4 and ending on C5 with a fermata.

*TG grade 8 flute*G \flat major scaleG \flat major arpeggioDiminished 7th. on F (Dominant minor 9th. in G \flat)E \flat melodic minor scaleE \flat harmonic minor scaleE \flat minor arpeggioG \flat chromatic scale

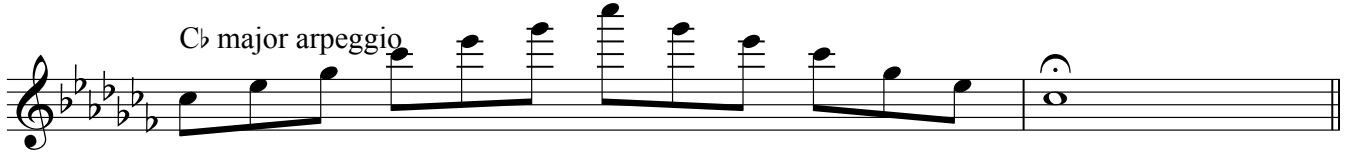
TG grade 8 flute

C \flat major scale



A musical staff in treble clef with a key signature of three flats (B \flat , E \flat , A \flat). The scale is written in eighth notes, ascending and then descending, ending with a whole note C \flat (B \flat).

C \flat major arpeggio



A musical staff in treble clef with a key signature of three flats. The arpeggio is written in eighth notes, ascending and then descending, ending with a whole note C \flat (B \flat).

A \flat melodic minor scale



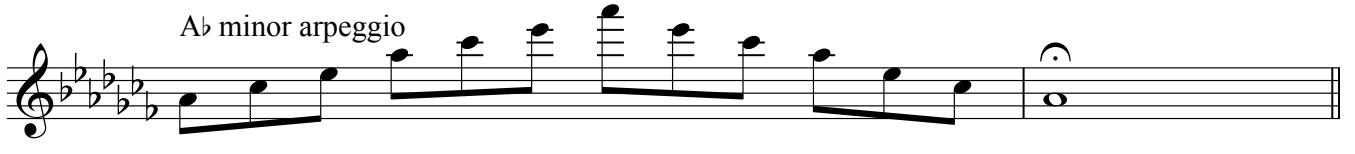
A musical staff in treble clef with a key signature of three flats. The scale is written in eighth notes, ascending and then descending, ending with a whole note A \flat .

A \flat harmonic minor scale



A musical staff in treble clef with a key signature of three flats. The scale is written in eighth notes, ascending and then descending, ending with a whole note A \flat .

A \flat minor arpeggio



A musical staff in treble clef with a key signature of three flats. The arpeggio is written in eighth notes, ascending and then descending, ending with a whole note A \flat .

C \flat chromatic scale



A musical staff in treble clef with a key signature of three flats. The chromatic scale is written in eighth notes, ascending and then descending, ending with a whole note C \flat (B \flat).



A musical staff in treble clef with a key signature of three flats. This staff continues the chromatic scale from the previous staff, showing the final descending notes in eighth notes, ending with a whole note C \flat (B \flat).